

WENTWORTH BY THE SEA COUNTRY CLUB  
PHONE LIST

**Main Clubhouse**.....603-433-3050  
*General Questions*  
*Membership*  
*Accounting and Billing*  
*Reservations*  
*Functions*  
*Hours of Operation*

**Golf Pro Shop**.....603-433-5010  
*Tee Times*  
*Golf Events*  
*Golf Schools and Private Instruction*  
*Hours of Operation*

**Wentworth Dining Room/Donald Ross Bar & Grill**.....603-433-5012  
*Dining Reservations*  
*Kids Club Reservations*  
*Hours of Operation*

**19<sup>th</sup> Hole**.....603-433-3061

**Sports Complex**.....603-610-0183  
*Hours of Operation*  
*Workout and Recreation Facility*  
*Fitness Class Registration*  
*Tennis Pro Shop*  
*Indoor Court Reservations*  
*Tennis Events, Lessons, Instruction*

**Outdoor Tennis Courts**.....603-433-5013  
*Court Reservations*  
*Tennis Events*  
*Tennis Camps and Private Instruction*

**Pool**.....603-433-5011  
*Swim Lessons and Private Instruction*  
*Swim Team Events*  
*Hours of Operation*  
*Snack Bar*

**Camp Wentworth**.....603-610-0183  
**Club Website: [wentworthbytheseacc.com](http://wentworthbytheseacc.com)**

WENTWORTH BY THE SEA COUNTRY CLUB  
**Rules and Regulations - Table of Contents**

**Club Rules and Regulations:**

General Club Rules  
Member Charges  
Resignation, Suspension, and Termination of Member Privileges  
Loss or Destruction of Property/Instances of Personal Injury  
Reservations and Cancellation Policies  
Gratuities  
Children  
Proper Attire  
Mailing Addresses  
Club Services and Activities  
Club Website  
Guest Privileges

**Golf Rules and Regulations:**

Golf Attire  
Guest Policy  
General Golf Rules  
Tee Time Policy  
Pace of Play Policy  
Play Coordinators  
Hours of Play  
Junior Play  
Registration  
Practice Facility  
Golf Cart Rules  
Tournament Rules  
Handicaps  
Golf Course Etiquette  
"Adopt A Hole" Program

**Food and Beverage:**

Minimum Requirements  
Reservations  
Attire  
Charge Accounts  
Gratuities  
19<sup>th</sup> Hole  
Beverage Cart  
Pool Snack Bar  
Private Parties

## WENTWORTH BY THE SEA COUNTRY CLUB

### **Tennis:**

Indoor Courts  
Outdoor Courts  
Paddle Tennis Courts  
Tennis Pro Shop  
Contract Court Time  
Tennis Programs and Instruction  
Ball Machine  
Dress Code  
Tennis Rules  
Player Ratings

### **Pool:**

Aquatics Programs  
Hours and Schedules  
Swim Lessons  
Lap Swim  
*Wentworth Dolphins* Swim Team  
Guest Policy  
Swimming Pool Rules

### **Sports Center:**

Hours of Operation  
Food and Beverage Policy

#### **Fitness Center**

Equipment  
Classes  
Fitness Trainers  
Cardio Theater  
Guest Policy  
Locker Rooms  
Recreation Room  
Indoor Golf Facility

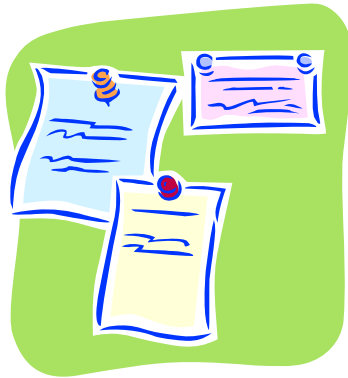
### **Member Directory**

Member Names, Contact Numbers, E-mail Addresses

**\*All guest fees quoted within are subject to change.**

WENTWORTH BY THE SEA COUNTRY CLUB

# RULES AND REGULATIONS



Valid since April 2007

# WENTWORTH BY THE SEA COUNTRY CLUB

## **Rules and Regulations**

It is the intent of Club Management to limit these rules and regulations to the minimum required for the mutual enjoyment of the Club by all members and their guests. The obligations of enforcing these rules and regulations for the good of all members is placed primarily in the hands of a carefully selected and trained staff whose principal responsibility is to assure you all the courtesies, comforts, and services to which you are entitled to as a member of this Club. It is further the responsibility of the membership of the Club to know these rules and regulations and to cooperate in the enforcement thereof.

## **General Club Rules**

1. Members, immediate family members, and their guests must abide by all rules of the Club as they may be amended from time to time. The immediate family of a member (for privileges with a family membership) includes the spouse of the member or significant other and their unmarried children under the age of twenty-three (23) who are living at home or attending school on a full-time basis.
2. The hours of operation at Wentworth By The Sea Country Club are established and published by WBTSCC Limited Partnership, doing business as Wentworth By The Sea Country Club, along with its affiliates (collectively, the "Club") considering the season of the year and other circumstances. Areas of the Club may be closed from time to time for scheduled maintenance and repairs.
3. Proper attire, decorum, and consideration of the rights and comforts of others must be observed at all times on the Club facilities.
4. All state and local laws concerning the sale of alcoholic beverages will be strictly enforced. Alcoholic beverages will not be served or sold, nor permitted to be consumed, on the Club's premises during hours prohibited by law. Alcoholic beverages will not be served or sold to any person not permitted to purchase the same under the laws of the State of New Hampshire. Liquor may be consumed only in areas designated by the New Hampshire State Liquor Commission and by persons twenty-one (21) years of age or older. Servers are required to ask for proof of age.
5. In order to properly credit your account for purchases made at the Club, members may be asked to present their membership cards at

## WENTWORTH BY THE SEA COUNTRY CLUB

the time of purchase. All charge ticket must be signed by the member. Employees are not permitted to sign charge tickets for members.

6. All food and beverages consumed on the Club premises must be purchased from the Club, unless otherwise permitted by the General Manager.
7. Complimentary fresh bath towels are supplied to members and their guests in the Clubhouse locker rooms. Towels and other locker room supplies are property of the Club and shall not be removed from the premises.
8. Members must not request special personal services from employees of the Club.
9. Members are not permitted in the golf cart storage area, bag room, golf course maintenance area, kitchen, or other service areas of the Club pursuant to New Hampshire Health and Safety Regulations. Members are allowed in the administrative office for Club business purposes only.
10. Members and their guests may not abuse any of the Club's employees, verbally or otherwise. All employees of the Club are under the supervision of the General Manager, and no member or guest shall reprimand or discipline any employee or send any employee off the Club facilities for any reason. Any employee not rendering courteous, prompt service should be reported to the General Manger immediately.
11. Vehicles may only be parked in areas designated by the Club for parking. Vehicles should not be parked on grass lawns, at the front entrance, in the delivery area of the Club, or in such a way that would obstruct or hinder the normal flow of traffic, unless specifically designated by the Club. A vehicle that is improperly parked will be removed at the owner's expense.
12. Self-parking is permitted in areas identified as such. "Handicap" and/or "No Parking" signs must be observed.
13. Dogs and other pets, with the exception of service dogs, are not permitted on the Club facilities without the prior approval of the

## WENTWORTH BY THE SEA COUNTRY CLUB

General Manager. Service dogs must remain under control at all times, and the dog or pet's member/owner is responsible for any damage caused by the animal.

14. Smoking is not permitted inside any Club facilities.
15. Firearms and all other weapons are prohibited from the club facilities at any and all times.
16. The roster or list of members in the Club shall not be used or given to anyone other than a member of the Club for any reason whatsoever and shall be given to a member of the Club at the sole discretion of the Club. Unauthorized release of the membership roster is viewed as a very serious breach of Club policy. Violations will be reviewed by the Club and may result in immediate expulsion or other sanctions.
17. Performance by entertainers will be permitted on the property of the Club only with the permission of the General Manager.
18. Commercial advertisements shall not be posted or circulated in the Club nor shall business of any kind be solicited or transacted on Club property nor upon Club stationary without the prior approval of the General Manager.
19. Petitions may not be originated, solicited, circulated, or posted on any property of the Club without the prior approval of the General Manager.
20. It is contrary to the Club policy to have its facilities used for functions which are in any way related to past, present, or future fund-raising efforts for the benefit of a political cause, except as specifically permitted by the General Manager.
21. All complaints, criticisms, or suggestions relating to the operations of the Club must be made in writing, signed, and addressed to the General Manager.
22. Violation of any of these rules or conduct in a manner prejudicial to the best interests of the Club will subject the person in violation to the disciplinary action deemed appropriate by the Club.

## WENTWORTH BY THE SEA COUNTRY CLUB

23. Any terms used herein which are not specifically defined in these Rules and Regulations shall have the same meaning ascribed to such terms in the Plan for the Offering of Memberships.
24. The Club reserves the right to amend or modify any and all of these Rules and Regulations when necessary and will notify the membership of any changes.

### **Member Charges**

1. A membership card indicating a Club account number will be issued to the member as well as other eligible members of the immediate family.
2. The right to charge to your personal Club account is extended as a privilege of membership and is subject to continuing review and approval by the Club.
3. All charges must be signed legibly by the member, and the member's last name must be printed on the charge ticket.
4. Members are responsible for the payment of all charges made by their immediate family and guests. With a Corporate membership, both the Company and the designated user are responsible for all dues, fees, and charges incurred by the membership.
5. It is the responsibility of each member to retain receipts for purchases. Copies of the monthly charges will not be included in the monthly statement. Receipts will be sent to members upon request if a charge is disputed.
6. A membership card may not be used by any person other than the person to whom it is issued. Membership cards are not transferable. Failure to comply with this rule may result in suspension or termination of membership privileges.
7. In the event of a lost or stolen membership card, the Club must be notified immediately, in writing. The account will be canceled, and the Club will issue a new account number and membership cards. This procedure is designed to reduce the risk that unauthorized persons will be able to charge to a member's Club account. Should written

## WENTWORTH BY THE SEA COUNTRY CLUB

notification of card loss or theft not be received, the member shall be responsible for all charges placed on the account. For each new membership card replaced, a service charge established by the Club will be placed on the member's Club account.

8. All food, beverage, merchandise, and services of the Club charged to the member's Club account will be billed monthly, and bills shall be mailed no later than the tenth (10<sup>th</sup>) of each month. Club accounts are due and payable upon receipt and no later than twenty (20) days after the date of the monthly statement. Club accounts shall be deemed delinquent if not paid within twenty (20) days after the date of the monthly statement. Delinquent accounts will accrue a late payment fee of 1% (12% annually) of the outstanding balance due, with a minimum charge of \$15.00.
9. If the Club account of any member is delinquent, the Club may at its discretion, take whatever action is deemed necessary to collect payment. The Club reserves the right to post the names of delinquent accounts on the bulletin board in the Clubhouse. If the Club commences legal action to collect any amount owed by a member, or to enforce any liability of a member to the Club, and if judgment is obtained by the Club, the member shall also be liable for all costs and expenses of the legal action and reasonable attorney's fees, including fees required in connection with appellate proceedings.
10. The Club also reserves the right to suspend and/or terminate membership privileges for failure to pay dues, fees, charges and any other amount owed to the Club in a proper and timely manner. Club membership privileges may be suspended if Club accounts are not paid in full within twenty (20) days and are subject to termination if Club accounts are not paid in full within thirty (30) days after suspension of membership privileges. The Club may, at its discretion, determine not to seek the forfeiture of membership privileges. Such determination shall not be deemed a waiver of its right to seek the forfeiture of membership privileges at a later date or against any other member of the Club.

# WENTWORTH BY THE SEA COUNTRY CLUB

## **Resignation, Suspension and Termination of Membership Privileges**

1. A member may resign membership in the Club at any time by delivering to the Membership Director a 90-day written notice of resignation.

Notwithstanding such resignation, the member and the member's spouse or significant other shall remain liable for all unpaid amounts on the member's Club account.

2. A membership, or any privileges associated with such membership, may be restricted, suspended or terminated at any time by the Club if, in the sole judgment of the Club, the member:
  - a. submitted false information on the Application for Membership Privileges;
  - b. submitted false information regarding an application for use privileges by a guest of the member;
  - c. permits the unauthorized use of a member's membership card or Club account;
  - d. exhibits unsatisfactory behavior, deportment or appearance, or acts in any other manner determined to be not in the best interest of the Club or its membership;
  - e. fails to pay dues, charges or any other amount owed to the Club in a proper and timely manner;
  - f. fails to abide by the Rules and Regulations established for use of the Club facilities, as amended from time to time;
  - g. treats the personnel or employees of the Club in any unreasonable, disrespectful or abusive manner;
  - h. fails to accompany a guest when using the Club facilities;
  - i. initiates legal or administrative action of any kind against the Club, its owners, officers or any of its affiliated entities; or
  - j. engages in any conduct that is improper or likely to endanger the

## WENTWORTH BY THE SEA COUNTRY CLUB

welfare, safety, harmony or reputation of the Club or its membership.

3. Notwithstanding any restriction, suspension or termination of membership privileges, the member and the member's spouse or significant other shall remain liable for all amounts unpaid on the member's Club account. No member shall on account of any such restriction, suspension or termination be entitled to a refund of any membership deposit, dues, fees or any other charges. During a restriction or suspension of membership privileges, all dues, fees and other charges shall continue to accrue and shall be paid in full prior to reinstatement as a member in good standing.
4. A member shall be notified of any proposed disciplinary action in writing, and shall be given an opportunity to be heard by the Club to show cause why the member's membership should not be restricted, suspended or terminated in accordance with these rules. If the member desires to be heard, the member must provide a written request for a hearing to the General Manager within five (5) days after the date of the Club's written notice to the member of the proposed action. Upon receipt of the written request for hearing, the Club shall set a time and date for such hearing, which shall in no event be less than five (5) days after such request. All hearings shall be before a three (3) member panel consisting of the General Manager, Membership Director, and the President of Wentworth By The Sea Country Club, Inc. (or another officer of the corporation directed by the President to act in the President's place.) A majority vote of the panel shall control. All decisions of the hearings panel shall be final. In the event that a member requests a hearing in accordance with this rule, the resignation, suspension or termination, as the case may be, shall not take effect until the date of the final decision of the hearings panel. In the event that the member does not request a hearing, then such disciplinary action shall be effective as of the date of the Club's written notice to the member of the proposed action.
5. The scope and duration of any restriction, suspension or termination of a membership, or any privileges associated with such membership, shall be at the sole discretion of the Club. The Club shall reserve the right to place any reasonable conditions or requirements to be satisfied by the member prior to reinstatement as a member in good standing. Any member whose membership has been terminated for any reason other than the failure to meet eligibility requirements for membership shall not again be eligible for membership nor admitted to use any of the Club facilities under any

## WENTWORTH BY THE SEA COUNTRY CLUB

circumstances, including as a guest of a member.

6. The failure of the Club to initiate disciplinary action, such as restriction, suspension or termination of membership privileges, as a result of a member's violation of any of the above rules or regulations, or the failure of the Club to enforce any of the above rules or regulations in any particular case, shall not be deemed a waiver by the Club of its power under these

rules to initiate such disciplinary action or to otherwise enforce the rules and regulations hereunder within its absolute discretion.

7. A member whose membership privileges have been restricted, suspended or terminated pursuant to this section, shall have no right of redress, cause of action, demand or claim whatsoever against the Club, its owners, officers or directors, except the review procedures contained herein. Each member shall indemnify and hold harmless the Club, its owners, officers and directors, from any alleged loss or injury of any kind resulting from such restriction, suspension or termination.

### **Loss or Destruction of Property or Instances of Personal Injury**

1. Each member as a condition of membership, and each guest as a condition of invitation to the Club facilities, assumes sole responsibility for his or her property. The Club shall not be responsible for any loss or damage to any private property used or stored on the Club facilities.
2. Property or furniture belonging to the Club shall not be removed from the room in which it is placed, or from the Club facilities, without proper authorization. Every member of the Club shall be liable for any property damage and/or personal injury at the Club, or at any activity or function operated, organized, arranged or sponsored by the Club, caused by the member, any family member or guest of the member. The cost of any damage shall be charged to the member's Club account.
3. Any member, guest or other person who, in any manner, makes use of, or accepts the use of, any apparatus, appliance, facility, privilege or service whatsoever owned, leased or operated by the Club, including without limitation the use of golf carts, or who engages in any contest, game, function, exercise, competition or other activity operated, organized, arranged or sponsored by the Club, either on or off the Club facilities, shall do so at his or her own risk. The member shall indemnify and hold harmless WBTSCC Limited Partnership, Wentworth By The Sea Country

## WENTWORTH BY THE SEA COUNTRY CLUB

Club, Inc. and the Club and their directors, officers, shareholders, partners, employees, affiliates, representatives and agents from any and all loss, cost, claim, injury, damage, or liability sustained or incurred by the member, family member, or guest of the member resulting therefrom and/or from any act or omission of any director, officer, shareholder, partner, employee, affiliate, representative, or agent of WBTSCC Limited Partnership, Wentworth By The Sea Country Club, Inc. or the Club.

4. Should any member bring suit against WBTSCC Limited Partnership,

Wentworth By The Sea Country Club, Inc. or the Club for any claim and fail to obtain judgment therein against them, the member shall be liable to WBTSCC Limited Partnership, Wentworth By The Sea Country Club, Inc. and the Club for all costs and expenses incurred by them in the defense of such suit, including reasonable attorney's fee (including fees required in connection with appellate proceedings).

### Reservations and Cancellations

1. Reservations may be required from time to time. Reservations are taken on a first-come, first-served basis by pre-registering with the appropriate personnel of the Club.
2. The Cancellation Policy requires a 48 hour notice to the appropriate club personnel prior to the start of the event for which the reservation was made. Any reservations not cancelled at least 48 hours in advance will be subject to applicable event fees and charges.

### Gratuities

1. A minimum gratuity percentage, as determined from time to time by the Club, will be added to all food and beverage sales for the convenience of all members. The gratuity will be applied to the food and beverage charge ticket total before taxes. Members may increase the gratuity amount by noting the new amount and signing the charge ticket.

### Children

1. **Children under 12 years of age** are permitted on the Club facilities **only** if accompanied or supervised by an adult.
2. No one **under 21 years of age** shall sit or stand at the bar.

# WENTWORTH BY THE SEA COUNTRY CLUB

## Attire

1. It is expected that members will dress in a fashion befitting the surroundings and atmosphere provided in the setting of our Club. It is also expected that members will advise their guests of our dress requirements.
2. The prevailing dress standard for the Clubhouse is “**nice casual**” – denim jeans are allowed as long as they are clean and not torn or ripped in any way. Men must always wear a collared shirt.

### **During the day:**

Appropriate golf or tennis attire is permitted in the Grill Room.

### **In the evening:**

Appropriate golf or tennis attire is permitted in the Grill, but “nice casual” is the minimum requirement in the Grill Room. From time to time, the Wentworth will have special events which may require a jacket and tie.

**T-shirts, athletic shorts, sweat pants, cargo pants or shorts, swimsuits, and cut-offs are never permitted.**

Please refer to the Golf and Tennis Sections of the Directory for specific examples of appropriate Golf and Tennis attire.

## Mailing Addresses

Each member is responsible for filing with the Membership Office in writing, the mailing address and any changes thereto, to which the member wishes all notice and invoices of the Club be sent. A member shall be deemed to have received mailings from the Club, ten (10) days after they have been mailed to the address on file with the Membership Office. In the absence of an address filing with the Membership Office, any Club mailing may, with the same effect as described above, be addressed as the Managing Director may think is most likely to cause its prompt delivery.

## Club Services and Activities

1. The Club provides a variety of social, cultural and recreational events in which all members are encouraged to participate. The Club encourages the use of the Clubhouse facilities by members for private parties, on any

Valid since April 2007

## WENTWORTH BY THE SEA COUNTRY CLUB

day or evening, provided it does not interfere with the normal operation of

the Club, or with the services regularly available to the members. Members are requested to contact the Special Events Director for available dates and arrangements.

2. The member of the Club hosting a private party shall be responsible for the conduct of the member's guests, for any damage caused by the guests, installation and removal of party décor.
3. Special member event functions will be scheduled from time to time at the discretion of the Club. There is a 48 hour cancellation policy on all member event reservations. Cancellations within 48 hours of the event will be subject to applicable event fees and charges.

### **Club Website**

The Club hosts and maintains an internet website on the world-wide web to provide general information about the facility. There is a "Members Only" section where golf, tennis and the sports center post their operational times, calendar of events, lessons, clinics, pool closings, etc. Club dining menus are available on-line, as well as information about upcoming special events.

### **Guest Privileges**

Guests of members may be extended guest privileges subject to applicable guest fees, charges, rules and regulations established, from time to time, by the Club. Guest privileges may be denied, withdrawn or revoked at any time for any reasons considered sufficient by the Club in its sole and absolute discretion. Although it is the intention of the Club to accommodate guests without any inconvenience to the members, the Club reserves the right to limit the number of guests that accompany a member on any given day or other time period. The Club also reserves the right to limit the number of times a particular guest may use the facilities of the Club during each membership year.

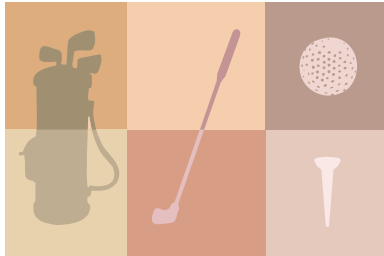
1. The guest(s) must be registered by the sponsoring member. Guests must be accompanied by the member at all times when using any facility of the Club, unless otherwise determined by the Club from time to time. Guests are permitted to use the Club facilities only in accordance with the privileges of the sponsoring member.

## WENTWORTH BY THE SEA COUNTRY CLUB

2. Guest charges for any services and applicable guest fees will be paid by the sponsoring member via member charge. The sponsoring member shall be responsible for all fees and charges incurred by the guest. Guest privileges may be limited by the Club, from time to time, at the sole discretion of the Club. Notice of such limitation will be given by the Club.
  
3. The sponsoring member is responsible for the conduct of a guest while at the Club. If the manner, deportment or appearance of any guest is deemed to be unsatisfactory, the sponsoring member shall, at the request of the Club, cause such guest to surrender the guest privileges and leave the Club facilities.

WENTWORTH BY THE SEA COUNTRY CLUB

# GOLF RULES



Valid since April 2007

# WENTWORTH BY THE SEA COUNTRY CLUB

## Golf Attire

The following dress code is mandatory for all golfers. Improperly dressed golfers will be asked to change before playing. If you are in doubt concerning your attire, please check with the Golf Shop before starting play. Any misuse or disregard of the rules may cause privileges to be reviewed and suspended.

### Acceptable

#### *Gentlemen:*

**Collared** shirts with sleeves, (i.e. camp shirts) golf shirts, mock turtlenecks, slacks, golf shorts or Bermuda shorts up to 4" above the knee) are considered appropriate attire. (Shirts, other than camp shirts, must be tucked in.)

#### *Ladies:*

Golf skirts/skorts, golf dresses, slacks, golf shorts or Bermuda shorts (up to 4" above the knee) blouses, or other golf-style shirts are considered appropriate attire.

#### *Footwear:*

Spikeless golf shoes are required on the golf course and practice areas.

#### *Headwear:*

Hats and visors must be worn with brim- forward.

### Not Acceptable

Sleeveless shirts, tank tops, tee-shirts, fishnet tops, cut-offs, jams, tennis shorts, jogging shorts, other athletic shorts, shorts more than 4" above the knee, cargo-style pants/shorts, excessively baggy shorts or shorts worn below the knee, bathing suits, sweatpants, jeans or denim clothing of any type.

Halter tops, tank tops, tube tops, tee-shirts, fishnet tops, cut-offs, bathing suits, sweatpants, jogging shorts or other shorts more than 4" above the knee, tennis skirts, jeans, or denim clothing of any type.

Use of shoes other than golf shoes must be approved by the Golf Shop. Soccer shoes, tennis shoes, flip-flops, and high-heels are not allowed.

## WENTWORTH BY THE SEA COUNTRY CLUB

### Guest Policy

1. Each Membership is allowed to bring up to 3 guests.
2. Guest(s) may play at any time as long as they are playing with the sponsoring member.
3. The same guest may only play **twice in the same month**. If a member brings a guest who has played more than twice in the same month, the member will be charged a \$100 guest fee and issued a disciplinary warning letter.
4. Weekday guest fees are currently \$60 for 18 holes/ \$30 for 9 holes. Weekend and Holiday guest fees are currently \$70 for 18 holes/\$30 for 9 holes. Riding carts and pull-carts are an additional fee. Guest fees may change at any time at the discretion of the Club.

### General Golf Rules

1. The rules of golf of the United States Golf Association ("U.S.G.A.") together with the Rules of Etiquette as adopted by the U.S.G.A. shall be the rules of the Club, except where modified by local rules.
2. Please review the Club website, Club newsletter, monthly calendar and Club activities boards for outings, fund-raising events, outside tournaments, and times when use of the course may be restricted.
3. **ALL members and guests MUST register in the Golf Shop before beginning play.**
4. All tournament play must be approved in advance by the Golf Professional.
5. The golf course may not be used for any purpose except golf. Picnicking, biking, kite flying, soccer, football, recreational walking, jogging, skateboarding, and similar activities are not permitted on the golf course.
6. At no time will pets be permitted to accompany golfers while playing.
7. Abusive language or profanity will not be tolerated.

## WENTWORTH BY THE SEA COUNTRY CLUB

8. If lightning is in the area, all play shall cease. Three (3) long blasts of the siren signals threatening weather and players must seek appropriate shelter immediately. Play must not begin until one (1) blast of the siren is subsequently heard.
9. Club management may close the golf course to play whenever the grounds could be damaged by play.
10. No beverage coolers are permitted on the course unless supplied by the Club.
11. Tee times will be reserved for the exclusive use of the Men's and Women's League on Tuesdays, during the season, from 4:15 p.m. – 6:45 p.m.
12. The Club will limit outside group play to Monday and Tuesday.
13. "Discontinued Play" policy for inclement weather is as follows: less than three (3) holes – full eighteen (18) hole credit; less than twelve (12) holes – nine (9) hole credit. It is the sole responsibility of the player to apply for a rain-check from the Golf Shop on the day of discontinued play.
14. All golfers must be off the course by dusk.
15. Prize merchandise from the Golf Shop may not be used as payment for merchandise previously purchased. However, prize merchandise from the Golf Shop may be used as credit toward a current or future purchase if it is returned within 7 days after being won. The amount of credit for prizes returned to the Golf Shop is limited to the price actually paid by the Committee. Frequently the Committee purchases prizes at a discount. In such case, the amount of credit allowed for a return prize is determined by the list price less the amount of discount. All credit accumulated at the Golf Shop must be redeemed by October 31<sup>st</sup> of the year in which it is earned.
16. The Club reserves the right to accommodate member's requests to have outings from time to time. Notices of these outings will be posted, indicating the hours during which the outing will take place.
17. The Club's policy has always been for the golf staff to provide the Membership with the highest level of personal service. Although tipping

## WENTWORTH BY THE SEA COUNTRY CLUB

is not required, if the level of service is deemed to be beyond normal, tipping is permitted at your own discretion.

18. The Club may establish the "walking policy" from time to time. All players must use a golf cart, pull-cart, carry bag with caddie or carry their own bag. The Club reserves the right to restrict or prohibit the use of pull-carts or the carrying of golf bags and may require the use of golf carts during certain periods of play. The Club may also prohibit the use of golf carts during wet and/or muddy conditions. Pull-carts and golf carts must remain on cart paths near tees and greens.

### **Tee Time Policy**

Members may make tee times up to eight days in advance using the on-line tee time system.

1. All players are required to make a tee time. If you do not know with whom you will be playing when you make a weekend tee time, (including Fridays) you will have until Wednesday at 5:00 p.m. to notify the Golf Shop with the names. If you do not notify the shop by 5:00 p.m. on Wednesday, the tee time will be erased except for the names that are already on the play sheet.
2. Any tee time cancellations must be done by 5:00 p.m. the day before.
3. If you do not show up with the same number of people that you made the time for, you will be billed \$20 for each golfer who does not show. If you call to change the number of players in your group by 5:00 p.m. the night before, no penalty will be administered. The member who makes the tee time is responsible for getting the correct information to the Golf Shop. He or she will be the person who would be charged any fines.
4. Wednesday-Sunday, the Golf Shop will save a tee time every hour, when available, starting at 8:00 a.m. The times will be 8:30, 9:30, 10:30, 11:30, 12:30, 1:30, and 2:30. These times can be made the day of, by phone or in person. These times may also be filled with members who

are on the tee time waiting list. Groups that are walk-ins will be let off in the order in which they check in. The Golf Shop will keep a daily waiting list of members who were unable to get a tee time. This list of names and phone numbers will be called daily by the Golf Staff as cancellations occur. If a member calls for a weekend starting time by 9:00 a.m. one (1) week in advance and is unable to get a morning tee time

## WENTWORTH BY THE SEA COUNTRY CLUB

(7:00 a.m. – 11:00 a.m.), the following steps will be taken:

- a. That member will be put on a waiting list, and called within 2 days by the Golf Staff.
- b. If by the following Friday, the member has not been worked in by a cancellation, he/she will be given one of the reserved Golf Shop times that weekend.
- c. If a member was unable to get one of these reserved times, this member would be allowed to make a tee time for the following weekend 8 days in advance.

### **Pace of Play Policy**

1. An acceptable pace of play for 18 holes is 4 hours and 3 minutes.
2. Prior to teeing off on Holes #10 and #18, check through the periscope provided to insure that golfers are out of range.
3. Play ball when ready. Unless a safety concern is evident, all players will adopt the practice of playing when ready regardless of who is away and who has the honor. This procedure will be enforced by the Play Coordinators.
4. Continually slow players will be noted and golf staff will attempt to improve such player's skills to enable them to complete play within four hours or less. If such efforts do not result in the required completion time, the Club may limit the play of such players to times other than prime playing time.

### **Play Coordinator**

1. Duties and responsibilities of the Play Coordinator are as follows:
  - (a) to administer and coordinate the orderly and efficient pace of play on the golf course under the direction of the Golf Shop personnel

## WENTWORTH BY THE SEA COUNTRY CLUB

- (b) to implement and administer the rules of the golf course
- (c) to use their authority to instruct twosomes to pair as foursomes when necessary
- (d) to report any infraction of the rules to the Golf Shop
- (e) to observe the course during the hours prescribed for play, for pace of play and notify the Golf Shop of any problems

### Hours of Play

The hours of play and Golf Shop hours will be posted in the Golf Shop. These hours will change during the season due to daylight and weather/temperature changes. Tee times may be made 15 minutes prior to the posted Golf Shop opening time. Generally, early and late season tee times will begin at 8:00 a.m. on weekdays and 7:30 a.m. on weekends. From mid-May through August, weekday tee times will start at 7:00 a.m. and weekends at 6:30 a.m.

### Junior Play Policy

**Note:** *As a private family country club, we want to encourage all members of the family to enjoy the game of golf. Fundamental to golf is that it be done in a safe environment for all. Safety for all at the Club is the paramount rule of operation. As member's children are participating in golf activities, we need to establish some policies that will ensure safety and enjoyment for all members using the practice facility or golf course.*

1. Juniors are defined for these Rules and Regulations as being **under the age of 18**.
2. Juniors must adhere to all the same Rules and Regulations as the rest of the membership.
3. Juniors wanting to be granted "playability" status for play and practice will be required to pass a written test and a playability test, administered by one of the golf professionals. These tests will be given on Tuesday afternoons at 3:00 p.m. The entire process will take approximately ½ hour. Sign up for these tests will be taken in the Golf Shop. The **playability test** consists of the following:

## WENTWORTH BY THE SEA COUNTRY CLUB

- Scoring a total of 16 or better on Holes 7 & 8
- A time limit of 20 minutes to play both holes
- Boys will play from the white tees. Girls will play from the red tees

The **written test** will consist of the following:

- Basic knowledge of the rules of golf
- Basic knowledge of golf etiquette

4. Juniors who have *not* passed the two (2) tests will be allowed to play the course or use the practice facility with their parents after 3:30 p.m. on weekdays and weekends. Family practice may be limited to 30 minute intervals based on members wanting to use the practice facility during a given time period.
5. For those juniors who have not yet passed the two (2) tests, a practice area will be set aside. This practice area is designed for the development and training for juniors with their parents.
6. Participants must be **18 years old** to play in the Club's major tournaments and **21 years old** for all Member/Guest Tournaments. There are tournaments throughout the year that Juniors under 18 are welcome to participate in. Each tournament sign-up will have the eligibility clearly stated. All Junior Tournaments will be for both boys and girls 18 years of age and younger.

### Registration

1. All members and guests **must** register at the Golf Shop before beginning play.
2. Failure to check in and register ten (10) minutes prior to a reserved starting time may cause cancellation or set back.
3. Players late for their starting time may lose their right to the starting time and shall begin play only at the discretion of the Play Coordinator.

### Practice Facilities

1. The outdoor practice range will be open as early as possible in the season at the discretion of the Golf Course Superintendent
2. The range will open 15 minutes before the first tee time and will close at dusk.

## WENTWORTH BY THE SEA COUNTRY CLUB

3. The range will be closed on Mondays until 11:00 a.m. for maintenance.
4. Golf carts are not permitted on any tee area. Parking of golf carts is allowed in designated areas only.
5. Balls must be hit from designated areas only. No hitting is permitted from the rough or sides of the practice facility.
6. There will be no hitting of woods or hybrids when the "Irons Only" sign is posted.
7. There will be no practicing allowed when the "Closed" sign is posted on the practice tee.

\* In addition to the outdoor practice facility, we offer an indoor practice facility that is open year-round. Please refer to the Sports Center section of this handbook for further details and hours of operation

### Golf Cart Rules



1. The golf staff is responsible for the golf carts, except when they are on the course. The Club maintains a fleet of carts which are available for a rental fee.
2. The use of motorized carts by members, immediate family members, their guest and other players is a privilege extended for their comfort and convenience.
3. Golf carts shall not be used by a member or guest on the Club facilities without proper assignment and registration in the Golf Shop.
4. The use of golf carts is mandatory if posted.

Valid since April 2007

## WENTWORTH BY THE SEA COUNTRY CLUB

5. Golf carts may only be used on the golf course when the course is open for play.
6. Each operator of a golf cart **must be at least sixteen (16) years of age** and have a valid driver's license
7. Golf carts cannot be used off the golf course.
8. Only two (2) persons and two (2) sets of golf clubs are permitted per golf cart. Violators will lose their cart privileges and may be subject to disciplinary action.
9. Obey all golf cart traffic signs.
10. The driver or passenger in a cart must not drag his/her feet outside the cart while the cart is in motion.
11. Always use golf cart paths where provided, especially near tees and greens. Use the ninety (90) degree rule when in effect and cross fairways only at right angles. Players are required to remain on golf cart paths, without exception, on Par 3 holes.
12. Carts are not permitted beyond the white line marked areas in front of the green. Except on the golf cart paths, do not drive a golf cart within thirty (30) feet of a green, tee, or bunker.
13. Never drive a golf cart through a hazard.
14. Be careful to avoid soft areas on fairways, especially after rains. Use the rough wherever possible.
15. When parking a cart, the cart brake must be set before leaving the cart.
16. When the "Carts In The Rough Only – No Crossovers" or "Carts On Paths Only" signs are posted, they must be strictly followed.
17. A maximum of two (2) carts will be allowed for each foursome.
18. When a "Carts In The Rough Only" (without "No Crossovers" restriction) sign is posted, crossover may be made once on any hole.

## WENTWORTH BY THE SEA COUNTRY CLUB

19. "Course Closed" or "Hole Closed" signs are to be adhered to without exception.
20. The use of privately-owned golf carts is permitted with the approval of the golf staff. Trail fees may be assessed.
21. Operation of a golf cart is at the risk of the operator. Cost of repair to a golf cart which is damaged by a member or any family member, will be charged to the member, or in the case of damage by a guest, to the sponsoring member. Members using a golf cart will be held fully responsible for any and all damages, including damages to the golf cart, that are caused by misuse of the golf cart by the member, any family member or their guests and the member shall reimburse WBTSCC Limited Partnership, Wentworth By The Sea Country Club, Inc. and the Club for any and all damages they may sustain by reason of misuse.
22. The member using a golf cart accepts and assumes all responsibility for liability connected with operation of the golf cart. The member also expressly indemnifies and agrees to hold harmless WBTSCC Limited Partnership, Wentworth by the Sea Country Club, Inc. and the Club and the directors, officers, shareholders, partners, employees, affiliates, representatives and agents, from any and all damages, whether direct or consequential, arising from or related to the use and operation of the golf cart by the member, any family member and their guests.
23. Violations of the golf cart rules may result in loss of golf cart privileges and/or playing privileges.

### Tournament Rules

1. Participants must be **18 years old** to play in the Club's tournaments and **21 years old** for all Member/Guest tournaments. There are tournaments throughout the year that **Juniors under 18** are welcome to participate in. Each tournament sign-up will have the eligibility clearly stated.

All **Junior tournaments** will be for both boys and girls **18 years of age and younger**.

2. The sign-up deadline for all tournaments is 5:00 p.m. on the preceding day unless otherwise posted. Any entries received after the deadline will be accepted on a provisional basis and will be honored only if an opening develops.

## WENTWORTH BY THE SEA COUNTRY CLUB

3. Cancellation notice is required for all tournaments at least 48 hours in advance of the event. If 48-hour cancellation notice is not given, there will be a charge to the member's account for the entire cost of the tournament.
4. The Gold tees may be used in the Men's competition by players 60 years of age or older with handicaps of 20 or more.
5. In all tournaments, the scoring putt or putts must be holed out.
6. All ties will be decided by matching cards on a sudden death basis at the first hole, unless posted to the contrary prior to the start of the tournament.
7. All members desiring to play in the Club tournaments must have an established U.S.G.A. approved handicap or have played five (5) 18-hole rounds at an established U.S.G.A. club. These scores must be verified. Guests of members who plan to participate in any Club tournament must submit their handicap to the Golf Shop. All handicaps submitted may be reviewed by the handicap committee. From time to time the Club will organize events not requiring an approved handicap.
8. Players making the turn or completing their round more than twelve (12) minutes after the group in front of them will be penalized two (2) strokes.
9. All play will be governed by the Rules of Golf as approved by the United States Golf Association.

### Handicaps

1. Handicaps are computed under the supervision of the Handicap Chairperson in accordance with the current U.S.G.A. Handicap System.
2. After each round of golf, all members must have their score attested, and their score entered into the handicap computer.
3. To establish a handicap, a member must have turned in a minimum of ten (10) scores.
4. Failure to post your score may result in the Golf Shop posting a score equal to the lowest of your last twenty (20) rounds. The Golf Shop will assist members with the posting procedures.

## WENTWORTH BY THE SEA COUNTRY CLUB

5. Accurate records are to be kept of scores turned in and recorded for all full rounds played. The Handicap Committee will determine if there are violations by members in turning in their scores. The Handicap Committee has the right to adjust handicaps.

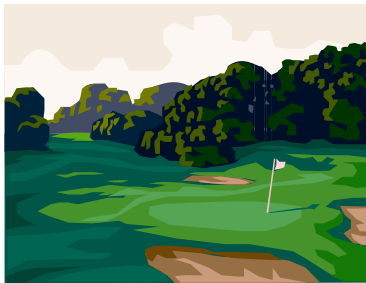
### **Golf Course Etiquette**

1. All players, especially children and beginning golfers, are expected to learn and observe the fundamentals of golf etiquette.
2. Flower beds and tree beds are considered ground under repair. If either of these conditions interferes with a player's stance or area of intended swing, the player is entitled to drop their ball within one (1) club-length of the nearest point of relief, no closer to the hole, without penalty.
3. "Cutting-in" is not permitted at any time. All play shall start on Hole 1 unless otherwise directed by the Club. All players must check in the Golf Shop before teeing off.
4. Practice is not allowed on the golf course. Playing more than one (1) ball is not permitted. The practice facilities must be used for all practice.
5. No more than five (5) minutes should be spent looking for a lost ball. If necessary, allow trailing foursomes to play through.
6. Players are requested to pick up tees after driving. Players should be careful in discarding broken tees since tees damage the mowers and puncture golf cart tires.
7. Enter and leave bunkers at the nearest level point to the green. Smooth sand over with a rake and place the rake outside the bunker upon leaving.
8. Repair all ball marks on the green, and replace and repair all divots.
9. Each player must have their own set of clubs.
10. Foursomes control the speed of play. Twosomes and threesomes have no play-through rights, should not exert any pressure on the groups ahead of them and must be prepared to play at foursome pace, except by invitation of the foursome ahead with at least a full hole open. Foursomes shall have the right of way.

## WENTWORTH BY THE SEA COUNTRY CLUB

11. Twosomes and singles will be grouped with other players, if available at the discretion of the Golf Shop. Singles shall have no priority on the golf course and shall be permitted to play only at the discretion of the Golf Shop. No more than four (4) players may play in one group, unless otherwise approved by the Golf Shop.
  
12. **“Adopt A Hole” Program** - Please help us keep the golf course looking beautiful by adopting a hole. You'll be assigned a hole according to the 1<sup>st</sup> letter of your last name, and asked to replace and fill divots, repair ball marks and pick up any stray paper or broken tees. Help keep your course beautiful! Thanks!

Hole #1 - A & B	Hole #2 – C	Hole #3 – D	Hole #4 – E & Y
Hole #5 – F	Hole #6 – G	Hole # 7 – H	Hole # 8 - I & J
Hole #9 – K & Z	Hole #10 – L	Hole #11 – M	Hole # 12 – N
Hole #13 – O	Hole #14 – P		Hole # 15 – Q & R
Hole #16 – S	Hole #17 – T, U & V		Hole #18 – W & X



WENTWORTH BY THE SEA COUNTRY CLUB

# *Food & Beverage Directory*



## **F&B Minimum Spending Requirement**

**Member Last Name  
Begins with:**

**Spending Cycle:**

**Minimum Spending  
Required:**

Valid since April 2007

## WENTWORTH BY THE SEA COUNTRY CLUB

<b>A – F</b>	Feb. thru May	\$225 for 120-day cycle
	June thru August	\$225 for 90-day cycle
	Sept. thru Nov.	\$225 for 90-day cycle
<b>G – M</b>	March thru June	\$225 for 120-day cycle
	July thru Sept.	\$225 for 90-day cycle
	Oct. Nov. and Feb.	\$225 for 90-day cycle
<b>N-Z</b>	Nov. Feb. Mar. April	\$225 for 120-day cycle
	May thru July	\$225 for 90-day cycle
	August thru October	\$225 for 90-day cycle

### **Specific Terms:**

- ❖ December and January are excluded from the minimum spending requirement.
- ❖ Members are not responsible for minimum spending during these months. Any member charges incurred during these months do not apply towards minimum requirements for other periods.
- ❖ Food and beverage charges at the Clubhouse, the 19<sup>th</sup> Hole and at the Pool Snack Bar will be applied towards minimums.
- ❖ Tax and gratuity do not apply toward the minimum spending requirement. Member Events that include a meal or meals as part of a package price or entry fee (such as a golf invitational) will not apply towards the minimum.
- ❖ Members' monthly statements will reflect the amount of any unspent minimums, and the date that the current spending cycle ends.

**All food, beverage & alcohol must be purchase at the Club facilities. Absolutely no food, beverage or alcohol shall be brought in by members or their guests.**

### **Reservations**

Valid since April 2007

## WENTWORTH BY THE SEA COUNTRY CLUB

Reservations for dinner in the Clubhouse are recommended; please call (603) 433-5012. Advance reservations for Club Events and Special Dinners (such as a Wine Dinner) are required. Please call the Clubhouse at (603) 433-3050 to book your reservation.

### Attire

Appropriate attire is required in all dining areas. Golf attire during the day (refer to the Golf Directory/Golf Rules/Golf Attire section for examples.) Evenings; "Country Club Casual" is requested.

### Charge Accounts

In order to properly credit your account for purchases made in the dining room, we respectfully request that you provide your server with your membership number prior to placing your order. All dining charge tickets **MUST BE SIGNED** by the purchasing member. Servers are not allowed to sign the check for you. In the dining room only, we will allow members and guests of the members to utilize major credit cards for purchase for food and beverages.

### Gratuities

For your convenience, a 20% gratuity will be added to your charge ticket unless a more generous gratuity is specified. The gratuity will be applied to the food and beverage charge ticket total before taxes.

### 19<sup>th</sup> Hole

Open mid-April to the end of October (weather permitting); Wednesdays through Sundays. We offer a complimentary continental breakfast weekdays and complimentary "Make your own Waffle" weekends. Sandwiches, soups and salads are available for purchase in the afternoon. Sit down and relax at one of the patio tables with wait staff service. Located on the 10<sup>th</sup> tee, there is a menu for the 19<sup>th</sup> Hole. Simply call in your order to (603) 433-3061 and your order will be ready for pick up when making the turn for the 11<sup>th</sup> tee.

### Beverage Cart

Valid since April 2007

## WENTWORTH BY THE SEA COUNTRY CLUB

The beverage cart will roam the course supplying snacks, beverages, beer and cigars. The cart will start its season on weekends in the month of May. Memorial Day through Labor Day operation will be Wednesdays through Sunday; after Labor Day until the end of September it will run on Saturday and Sunday.

### **Pool Snack Bar**

We also offer food & beverages at the concession area at the pool. We offer sandwiches, salads, pastries, ice cream, snacks and soft drinks.

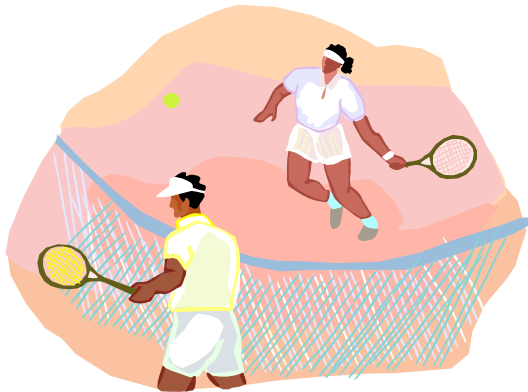
All food and beverage at the pool concession will be purchased via member charge only. Food & Beverage/Pool staff is not responsible for limiting charges made by children of members.

### **Private Parties**

Private parties are available in certain areas of the Clubhouse/Tent when it does not conflict with general membership use. Menu items are available for groups of up to 200 people. Please contact our Special Events Director at (603) 433-3050 for available dates and specifics.

WENTWORTH BY THE SEA COUNTRY CLUB

# *Tennis Directory*



## **Indoor Courts**

Valid since April 2007

## WENTWORTH BY THE SEA COUNTRY CLUB

Located in the Sports Center, our 4 state-of-the-art indoor tennis courts are open year-round for play. Indoor court reservations may be made by calling (603) 610-0183 ext. 32 or by calling the outdoor courts at (603) 433-5013 during seasonal operation. Members must be 14 years old or older in order to use the courts unsupervised.

### Outdoor Courts

The 4 Har-Tru outdoor courts open in early May and close in October (weather permitting). Three courts are lit for evening play. Court reservations and operational hours are available by calling the Tennis Shop at (603) 433-5013.

### Paddle Tennis Courts

Located behind the Sports Center we have two (2) lighted platform tennis courts. These courts are available for play throughout the winter. To reserve a court call the Sports Center at (603) 610-0183 ext. 32.

### Paddle/Platform Tennis Rules & Regulations

- Court reservations can be made by using your on-line court booking system. Members can make a reservation up to 6 days in advance and book in 1-1/2 hour increments.
- All members must sign in, inside the warming hut. If playing with a guest, please print the guest name in the appropriate column.
- The same guest may only play twice within the same month. Guests will not be allowed to utilize the courts without the sponsoring member present during the entire period of play.
- Members and/or their guests are prohibited from bringing alcoholic beverages onto this property.
- Shovel snow from the paddle courts with plastic shovels (only) before turning on the heaters. Only use the heaters to melt the last remnants of snow or ice.
- Heaters are not to be used for the purpose of warming the courts or the players. Overuse of heaters causes serious risk of fire or explosion.
- Do not use salt or ice melt; it causes damage to the non-slip court finish.
- Do not slam or crash into wire walls; it loosens them and causes indentations.
- Properly dispose of any trash

### Tennis Pro Shop

## WENTWORTH BY THE SEA COUNTRY CLUB

Our Tennis Pro Shop offers a wide variety of high-tech tennis attire, footwear, racquets, paddles and balls. Racquet stringing service is also available. The Tennis Pro Shop opens in mid-May at the outdoor courts and moves back inside to the Sports Center in mid-September (weather permitting). Hours are posted at the Tennis Pro Shop. Phone numbers: for the Outdoor Tennis Pro Shop (603) 433-5013 and for the Indoor Tennis Pro Shop (603) 610-0183 ext.32.

### **Contract Court Time**

Contract court times are available at the indoor tennis courts. A reservation is made for the same day and time for the entire indoor session. Contract reservations are prepaid and then guaranteed for the season. **No more than 2 courts will be reserved for contract play at any time.** For more information or to purchase contract court time, call the Sports Center at (603) 610-0183 ext. 32.

## **Tennis Programs & Instruction**

The Wentworth By The Sea Country Club Tennis Academy offers comprehensive tennis programming welcoming players of all age and ability levels. Our USTPA certified staff offers a wide variety of lessons from group, to semi-private and private, as well as summer camps. To register for lessons call the Pro Shop at (603) 610-0183 ext.32.

Please review the Club website, Club newsletter, monthly calendar and Club activities boards for special events, tournaments, socials, and times when use of the courts may be restricted.

### **Junior Instruction**

The Junior Tennis Program is committed to providing a high level of quality tennis instruction. The instructional program plays a vital role in providing the Junior player with the skills and self confidence to arrange and play matches with others. Lessons feature instruction with games and fun drills, and complemented by Jr. Challenge Ladders. Throughout the year we offer Round-Robin and Tournament play and inter- and intra-club matches. Please check the Bulletin Board for postings or ask one of the Tennis Professionals to add you to the mailing list and/or e-mail list.

## WENTWORTH BY THE SEA COUNTRY CLUB

Instruction operates on a 5:1 student-to-pro ratio. Registration for a 10-week session must be in advance. There is no prorating for missed classes. Make-ups will be at the discretion of the Tennis Director.

### **Adult Instruction**

Whether your “racquet” is playing matches, taking instructional clinics, or simply hitting against the ball machine, we are ready for you. All lessons and clinics are instructed by USTPA certified staff, committed to delivering helpful tennis tips to improve your game. In addition to lessons we offer cardio-tennis, creative and energetic tennis socials, round robins and intra- and inter-club team matches allowing players of all ability levels to enjoy tennis year-round. Please check the Tennis Information Board and Club Website for postings or ask one of the Tennis Professionals to add you to the tennis mailing list and/or e-mail list.

### **Tennis Workouts**

The Club will offer small group workout clinics for various skill levels. Players receive instruction on strokes and strategy while going through an intense workout. These programs are prepaid for a 10-week commitment. While there are no refunds for absences, players may arrange for substitutes if they wish. Each weekly class runs 1-1/2 hours. (Minimum of 4 students per class.)

### **Tennis Socials – “Themed” Mixed Doubles**

Several times a year, the Club will host a mixed doubles social. The social includes hors d'oeuvres, “cocktail of the night” (such as margaritas) and organized play. This is a great way to enjoy a casual evening out with old and new friends. Refer to the Club newsletter, Club website, or on the Tennis Information Board for dates. Sign-up by calling (603) 610-0183 ext. 32 or on the sign-up sheet posted on the Tennis Information Board. All Tennis Socials are subject to the Club's Cancellation Policy.

### **Ball Machine**

Our state-of-the-art ball machine is a great learning tool to enhance your “muscle memory” on a particular stroke. Book a court and ask for the ball machine to reserve it in advance.

# WENTWORTH BY THE SEA COUNTRY CLUB

## Dress Code

All players are required to wear proper tennis attire whenever they are on the court.

- Bathing suits and non-tennis shoes are not permitted.
- Players must wear regulation shorts or skirts and tops. Men must wear shirts with sleeves.
- Smooth soled shoes that do not mark the court are required. Running shoes and other soft-soled shoes are unacceptable.
- Inappropriate attire includes jeans, cargo pants/shorts, cut-offs, tee-shirts, sleeveless tops for men and sports bras for women.

Players who do not meet the dress code will be denied access to the courts. Please see the Tennis Director with any dress code questions or call (603) 610-0183 ext.32.

## TENNIS RULES

The following rules and operation policies have been established to ensure that all of the membership enjoys the tennis facilities. Please familiarize yourself with these rules.

- Proper tennis attire shall be worn at all times. Shorts with pockets, skirts and shirts must be designed specifically as tennis wear. Appropriate tennis shoes are also required.
- **All players must sign-in** at the Tennis Pro Shop before taking the court.
- All court reservations will either be made in person at the tennis facility or by calling the Tennis Pro Shop at 603-610-0183 (indoors) or 603-433-5013.
- Court reservations must be made at least 48 hours in advance. During heavy use periods the Director of Tennis reserves the right to limit one (1) reservation per half day. This would mean that a reservation could be made before 1:00 p.m., and then another reservation in the afternoon.
- Members must be **14 years or older** to use the tennis courts **unsupervised**.

## WENTWORTH BY THE SEA COUNTRY CLUB

- **Guests of members must sign in** at the Tennis Pro Shop with the sponsoring member before taking the court. Guests will not be allowed to utilize the courts without the sponsoring member present during the entire period of play.
- In any month, a member will not be allowed to host the same guest more than twice. Member/Guest events and other special events will not be included in calculating the number of times a guest has been at the tennis facility in any given month. Exception to this policy will be at the sole discretion of the General Manager and/or Director of Tennis.
- All mixers, socials, clinics, tournaments and other special events will require registration through the Tennis Pro Shop.
- There is a 24-hour cancellation policy for all lessons and clinics, and a 48-hour cancellation policy for special events. If not cancelled in advance, and the spot is not replaced by another member, then a charge for the full amount of the lesson, clinic or special event will be placed on the account of the member making the reservation.
- Improper behavior or language will not be tolerated at any time.
- Members and guest finishing play on the outside courts are responsible for sweeping the courts and delineating the lines so they are ready for play. In order that the next set of players may take the court on time, please be aware to end your game in enough time to accomplish this in a timely manner.
- There will be no play allowed when the "CLOSED" sign is posted on the tennis courts.

These rules will be enforced fairly and equitably by the Tennis Staff and Club Management. Sanctions related to violation of these policies will be at the sole discretion of the Director of Tennis and/or the General Manager.

### **PLAYER RATINGS**

The United States Tennis Association (USTA) have developed a system for rating player skills in order to match them with players at the same level. This system is called the **NATIONAL TENNIS RATING PROGRAM (NTRP)** and provides for players to be visually rated by a pro. Ratings range from 1.0 to 7.0; the average club rating is in the 3.0 to 3.5 range.

Valid since April 2007

# WENTWORTH BY THE SEA COUNTRY CLUB

To participate in any program identified with this system, players must either have a rating at the appropriate level from the USTA or receive one from a professional. For more information, contact the Director of Tennis.

## **NTRP GENERAL CHARACTERISTICS OF VARIOUS PLAYING LEVELS**

### **Beginner**

**1.0** This player is just starting to play tennis

### **Advanced Beginner**

- 1.5** This player has limited experience and is still working primarily to get the ball in play.
- 2.0** This player needs on-court experience. This player has obvious stroke weaknesses but is familiar with basic positions for singles and doubles play.
- 2.5** This player is learning to judge where the ball is going although court coverage is weak. This player can sustain a rally of slow pace with other players of the same ability.

### **Low Intermediate**

**3.0** This player is consistent when hitting medium-paced shots, but is not comfortable with all strokes and lacks control when trying for directional intent, depth or power.

### **Intermediate**

**3.5** This player has dependable strokes, including direction on moderate shots, but still lacks depth and variety. This player is starting to exhibit more aggressive net play, has improved court coverage, and is developing teamwork in doubles.

### **Advanced**

**4.0** This player has dependable strokes, including directional intent and depth on both forehand and backhand sides on moderate shots, plus the ability to use lobs, overheads, approach shots and volleys with some success.

Valid since April 2007

## WENTWORTH BY THE SEA COUNTRY CLUB

This player occasionally forces errors when serving and teamwork in doubles is evident.

- 4.5** This player has begun to master the use of power and spins and is beginning to handle pace, has sound footwork, can control depth of shots, and is beginning to vary tactics according to opponents. This player can hit first serves with power and accuracy, and place the second serve and is able to rush the net successfully. Aggressive net play is common in doubles.
- 5.0** This player has a good shot anticipation and frequently has an outstanding shot or exceptional consistency around which a game may be structured. This player can regularly hit winners or force errors off of short balls and can put away volleys, can successfully execute lobs, drops shots, halt volleys and overhead smashes, and has good depth and spin on most second serves.
- 5.5** This player has developed power and/or consistency as a major weapon. This player can vary strategies and styles of play in a competitive situation and hits dependable shots in a stress situation.
- 6.0** This player will generally not need NTRP ratings, as past rankings will speak for themselves. The 6.0 player typically has had intensive training for national tournament competition at the junior and collegiate levels and has obtained a sectional and/or national ranking.
- 6.5** The 6.5 player has a reasonable chance of succeeding at the 7.0 level and has extensive satellite tournament experience.
- 7.0** The 7.0 player is a world-class player who is committed to tournament competition on the international level and whose major source of income is tournament prize earnings.

WENTWORTH BY THE SEA COUNTRY CLUB

# *Pool Directory*



Valid since April 2007

## WENTWORTH BY THE SEA COUNTRY CLUB AQUATICS PROGRAM

Welcome! The management team and Pool Staff have worked hard to prepare the aquatics program, including; the “*Wentworth Dolphins*” Swim Team, professional swim instruction by our certified lifeguards, recreational activities, and most importantly a safe and enjoyable environment for all members and their guests to enjoy.

### **Pool Hours & Schedule**

Our outdoor, heated pool and toddler pool are open daily from Memorial Day through Labor Day from 10:00 a.m. – 8:00 p.m. weather permitting. Please refer to your monthly newsletter and our website for up-to date program listings, special events, and pool closings. **All members and their guests must sign in** prior to entering the pool area.

### **Private and Semi-Private Swim Lessons**

The Aquatic Director will supervise all swim instruction programs. Private and semi-private lessons will be offered, and scheduling of these lessons may be done at the pool when the pool opens in May and continuing throughout the summer. Lessons will be either half hour or hour long sessions to be scheduled at your convenience. Instruction will follow the American Red Cross Water Safety Instruction Standards.

### **Lap Swim**

To allow adults to use the facility for exercise and enjoyment, and dependent upon how busy the facility is at the time, we will designate one lane for lap swimming for all members over the age of eighteen (18). We will designate specific times each summer for lap swim.

### **“*Wentworth Dolphins*” Swim Team**

The *Wentworth Dolphins* program is offered for swimmers ages 5-18 and is a huge success. Swim Team, however, **is not a substitute** for swim lessons, as it focuses on fine tuning swimming strokes and developing skills related to conditioning and competition. Swimmers who sign-up for swim team, should be able to swim, without any difficulty, at least one (1) length of the pool.

## WENTWORTH BY THE SEA COUNTRY CLUB

Older participants should be able to swim at least two (2) lengths of the pool continually.

The Swim Team program will begin in June and run through the second week of August. During this period, practices will be held three (3) days a week. Exact dates and times of practice & meets will be available to members as soon as they are finalized. Registration for swim team will be on a first-come, first-served basis.

Please refer to our website for up-to-date scheduling information, registration for swim team, and pool closings.

Wentworth By The Sea Country Club is a member of the Summer Aquatic League and we compete with other clubs in New Hampshire and Massachusetts. Dates for meets are determined at the May meeting and will be announced thereafter. The league also competes in the year-end Summer Championship Swim meet in August. Each swim team member has the option to purchase a "*Wentworth Dolphins*":

League swimsuit  
League bathing suit  
League carry bag

Goggles  
League T-shirt

The fee for each swim team member and the league items will be announced with the practice dates and schedules as soon as they are available. Purchase of these items will be additional.

### **Pool Guest Policy**

Members may bring guests to the pool. However, the same guest may only come to the pool twice in the same month. This limitation is in place to accommodate guests of members, but also to ensure that the pool facilities are always available for the members in an enjoyable and safe environment.

Regular nannies and childcare providers (ages 16+) must register with the Aquatics Director, and will not be charged guest fees when taking the place of a parent or guardian. If the parent is present at the pool, the nanny will be considered a guest and the member's account will be charged the appropriate guest fee.

# WENTWORTH BY THE SEA COUNTRY CLUB

## Swimming Pool Rules

The rules established by the Aquatics Director and Club management have been developed with safety as the primary concern. Safe fun is the goal for all members using the swimming pool facility. Parents and others who will be supervising children at the pool are asked to familiarize themselves with the pool rules. It should be understood that the Aquatic Director and the Lifeguards have complete authority over the pool area. They will be responsible for enforcement of all rules, including limiting the activities of anyone who interferes with the enjoyment of other members.

- **All members and guests must sign in** at the pool desk prior to entering the pool area. Guests may be restricted on holidays and weekends due to the heavy use of the facility by members.
- **Children under the age of twelve (12) MUST be accompanied by an adult or other person age 16 or older, who is responsible for the safety and behavior of the children at all times.** These individuals will be responsible for the safety and conduct of the children even when the Aquatic Director and Lifeguards are on duty.
- Childcare providers must be **at least 16 years of age.**
- There will be no touching in the pool other than inadvertent.
- There will be **NO DIVING** at any time or at any location in the pool area. Diving will result in a suspension from the pool for a period of time determined by the Aquatic Director and/or Lifeguards.
- No swimming is permitted unless a lifeguard is on duty and present in the pool area.
- No running is permitted on the pool deck at any time.
- We will designate specific times each summer for Adult swim during the regularly scheduled pool hours. During these periods no children under the age of 18 will be allowed in the pool.
- Only food and beverage (other than baby food/beverage) purchased at the pool concession stand will be allowed in the pool area. Food is

## WENTWORTH BY THE SEA COUNTRY CLUB

permitted to be consumed at the tables and chairs that have been provided. No food or beverage will be allowed in the pool.

- All members are responsible for discarding any and all refuse generated from their food and beverage purchases. **No glass containers will be permitted at any time.**
- There is **No Smoking** on the pool deck.
- You must shower before swimming.
- Hair shoulder-length or longer must be secured before swimming.
- The use of snorkels in the pool is prohibited.
- **Infants and toddlers in diapers who will be using the pool must wear an approved combination of swim diaper/bathing suit.** Swim diapers are available for sale in the pool concession area. Changing tables have been provided in both the men's and women's locker rooms.
- **If a child is using a learn-to-swim device such as arm "floaties", their parent or guardian MUST BE IN THE WATER WITH THEM AT ALL TIMES.**
- Children under the age of 10 will be limited to the shallow end of the pool until they have passed a swimming test given by the lifeguards and/or Aquatics Director. They must demonstrate their ability to swim the 25 meter length of the Club pool, using the freestyle stroke.
- Radios and other electronic devices are allowed at the pool only if used with a headset or other ear listening devices.
- Flotation rafts and small toys for pool games will be allowed at the pool **ONLY** with the permission of the Lifeguard on duty. When the pool is crowded, all flotation devices and toys may be prohibited by the Lifeguard on duty.
- No persons with communicable diseases can enter either pool.
- No screaming or loud noises are permitted in the pool area.

## WENTWORTH BY THE SEA COUNTRY CLUB

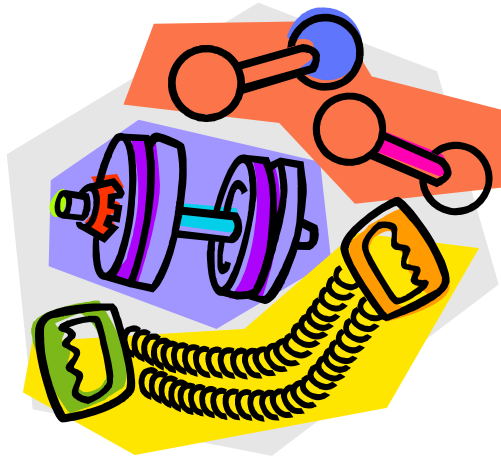
- Proper and appropriate pool and casual clothing is required when at the pool. No denim or cut-offs are allowed.
  
- In case of thunder and/or lightening in the area, the pool will be cleared immediately. The pool will remain cleared until the Aquatics Director and/or Lifeguard determines that the threat of lightening has cleared the area by at least 20 minutes.

**Enforcement** of these rules will be done in the following manner:

1. The first reprimand will be an oral warning.
2. The second reprimand will result in sitting out by the Lifeguard chair.
3. The third reprimand will result in ejection from the pool for the rest of the day and the next day.
4. Continued violations will be brought to Club management for sanctions that may include extended periods of being restricted from using the pool.

All of the rules and policies have been developed to ensure the safety and enjoyment of all members. The Pool Staff will do everything possible to maintain an environment that is pleasurable to everyone utilizing the pool facilities.

# *Sports Center*



# WENTWORTH BY THE SEA COUNTRY CLUB

## SPORTS CENTER

The Sports Center is located just down the path from the Golf Pro Shop. The Sports Center offers a variety of activities including:

- 4 Indoor Tennis Courts
- A fully equipped Fitness Center
- Indoor Golf Practice Area
- Locker rooms (day lockers available)
- Exercise Class Area
- Recreation/Game Room
- Tennis Viewing Area

### Hours of Operation & Information

The Sports Center is open 7 days a week from 6:00 a.m. – 9:30 p.m. Members will have **electronic key access** that will work between the hours of 6:00 a.m. and 9:30 p.m. Be sure to bring your access key with you in order to enter the facility.

A vehicle access road is open from approximately December 1 to April 15<sup>th</sup>; during the months that the golf course is closed. Please observe the posted signs and speed limits while driving on the access road. Parking is permitted behind the Sports Center only when the access road is open.

Upon entering the Sports Center everyone must change out of street shoes in the vestibule and into clean, dry tennis shoes or sneakers. When entering the Sports Center through the rear entry, please be quiet while walking behind the tennis courts so you do not disturb play on the courts. Smoking is prohibited in the Sports Center. Children **under the age of 12** must be **accompanied by an adult responsible for the safety and behavior of the children at all times** while in the Sports Center.

All members are required to participate in a brief orientation at the Sports Center prior to receiving their electronic key for access. Please call (603) 610-0183 ext. 31 to schedule an appointment for orientation with the Recreation Director.

The Sports Center will be closed on Thanksgiving, Christmas & New Years Day

# WENTWORTH BY THE SEA COUNTRY CLUB

## **Food & Beverage Policy**

The Sports Center has several vending machines to purchase soda, water and snacks. Vending machines are located on the entry level in the hallway outside the locker rooms and upstairs in the recreation/ game room. Due to NH Liquor Licensing Laws, under no circumstances are members permitted to bring alcoholic beverages into the Sports Center. During Club-run events such as Margarita Mixers, food and beverages will be served by the Club in the recreation/game room.

## **FITNESS CENTER** **Equipment**

The fitness center has state-of-the art equipment including:

### Strength & Stretching Equipment

Icarian free weights  
Incline, decline & flat benches  
Icarian knee raise station  
Precor stretching station

### Cardio Equipment

3 Precor elliptical machines  
3 Life Fitness treadmills  
3 Life Fitness stationary bikes  
1 Life Fitness stair stepper

Workout accessories are also available including mats, medicine balls, fit balls, jump ropes, stretch bands, and balance boards. Members will be required to participate in an equipment orientation to familiarize them with the fitness machines. In order to use the fitness center, members must be 16 years of age or older unless under the supervision of their personal trainer.

## **Personal Trainers**

Members will be permitted to bring their own personal trainers to the Fitness Center free of charge. The Fitness Center will also provide the names of personal trainers for those members seeking to hire a trainer.

## **Cardio Theater System**

All the cardio machines are equipped with the Cardio Theater system, which will allow the user to select from various television stations. Members may bring their own headphones or may purchase headphones at the Sports Center.

# WENTWORTH BY THE SEA COUNTRY CLUB

## **Guest Policy**

- ✓ The same guest will be permitted a maximum of two (2) visits per month.
- ✓ At the discretion of the General Manager, exceptions may be made for out-of-town family guests staying for a short time.

## **Classes**

The Fitness Center offers Yoga, Pilates, Spin and Boot Camp classes running continuously every eight (8) weeks. For schedules and additional information, refer to the Club newsletter, Activities Boards at the Sports Center, or call the Recreation Director at (603) 610-0183 ext. 31 to be added to the e-mail list.

## **Locker Rooms**

The Sports Center has both men's and ladies' locker rooms. The locker rooms are equipped with day-use lockers that members may use while at the Sports Center.

There are showers in both locker rooms. Toiletries are provided including shampoo and body wash. In addition, there are hair dryers, brushes and combs. Members must provide their own bath towels.

## **Recreation Room**

The room is equipped with a wide-screen T.V., and a variety of games such as Air-Hockey, Foos-Ball and table-tennis.

Furnished with small round dining tables, the Recreation Room is available for private parties such as birthdays. For information on availability and conditions, please contact our Catering Director at (603) 433-3050 ext. 13.

Designed as a benefit for members who wish to bring their children and sitters along while they use the Sports Center, the Recreation Room is available to members and their guests.

## WENTWORTH BY THE SEA COUNTRY CLUB

Parents or sitters must remain in the Recreation Room at all times with children under 12 years of age. Children 12 and older are allowed in the

Recreation Room without an adult as long as their parent has signed the child in and the parent remains at the Sports Center.

### Indoor Golf Practice Facility

The Sports Center also features an indoor golf practice facility. Amenities of the facility include:

- 6 large hitting stations; one of which has simulated rough to hit from
- 72' putting green, running 9 to 10 on the "Stimp Meter"
- Chipping areas
- Lounge area with seating for 4

The indoor golf facility will also play host to golf programming all winter long. Some of the programs that may be offered include:

- Men's Golf Clinics
- Women's Golf Clinics
- Junior Golf Clinics
- Club Fittings
- Video Lessons
- Full Swing Analysis
- Putting and Chipping Tournaments

Members will be notified of the schedules via Club newsletters, e-mail and postings on the Activities Boards at the Sports Center and on our website. If you wish to be included on the e-mail list, call the Golf Pro Shop at (603) 433-5010. Members must be **16 years or older** in order to use the Indoor Golf Range **unsupervised**.

